



Estates and Buildings Information System

User Guide

ARCHIBUS/FM V17

PPM – Importing and Exporting PDA

Foreword

This User Guide document has been designed for the purpose of training relevant members of staff within Estates and Buildings.

System Support

If you require assistance please contact Ebisusers@ed.ac.uk in the first instance. All urgent requests should be directed to the Ebisusers Support Desk on ☎ 50 9683.

More information on the EBIS Project is available at:-

<http://www.ebis.estates.ed.ac.uk>

Logging on to EBIS Online

Login to the following url using user name and password which are supplied by Ebisusers.

<https://www-live.ebis.estates.ed.ac.uk/ebistop.cfm>

This will open menu bar showing what access you have been set up with.

Logging on to Archibus

Double click on the Archibus-FM 17 icon  on desktop to open Core Archibus Program.

In Project double click on  to open up Project

Enter User Name and Password – which are supplied by Ebisusers – then click OK

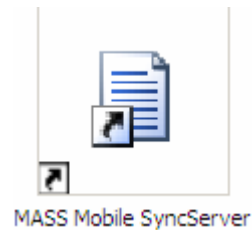
This will now open up the Archibus/FM Navigator showing all modules/groups you have access to.

PPM Importing and Exporting User Guide

Importing

Make sure PDA is in docking station

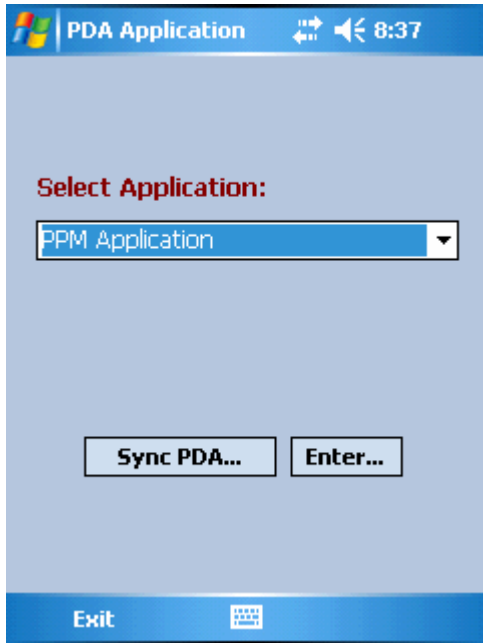
Before carrying out Import or Export of PPM jobs double click on PDASyncServer on desktop to connect to pda.



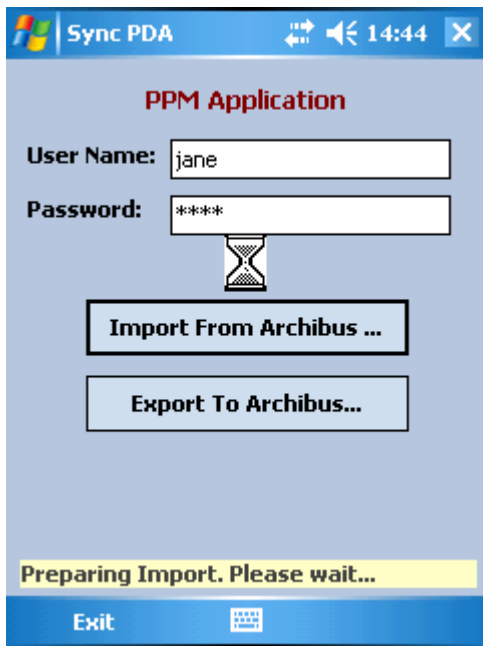
From PDA Select PPM_Mgmt from App Center Screen.



Click on Sync PDA to Sync with Archibus



This will then bring up login screen where you should enter User Name and Password and select Import From Archibus to start the sync process. This will take a while.



Select supervisor, to date, building from and building to and trade and click on Import. In order to Import all Work Orders for the selected Supervisor you should select full building range.

Import 2:03p

Supervisor: PETER REYNOLDS

To Date: 04/02/2009

Building Range:

Building: 0001 - OLD COLLEGE

Building: 0001 - OLD COLLEGE

Trade: HEATING ENGINEER

Import Enter...

Exit

Import 2:04p

Supervisor: PETER REYNOLDS

To Date: 04/02/2009

Building Range:

Building: 0001 - OLD COLLEGE

Building: 0001 - OLD COLLEGE

Trade: HEATING ENGINEER

Import Enter...

Exit

Sync PDA

Are you sure you want to import data from Archibus to PDA?

Yes No

Click Yes



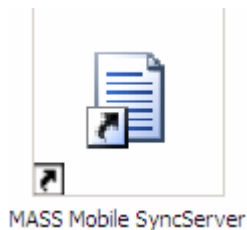
Click ok. PDA is now ready for Supervisor to carry out work on Jobs which have been imported to PDA.

Exporting

Once work has been completed on PDA this should then be Exported back to Archibus. To do this:

Make sure PDA is in docking station

Before carrying out Import or Export of PPM jobs double click on PDASyncServer on desktop to connect to pda.



Click on PPM_Mgmt from App Center to open Program.

Symbol AppCenter    1:58p



Calculator

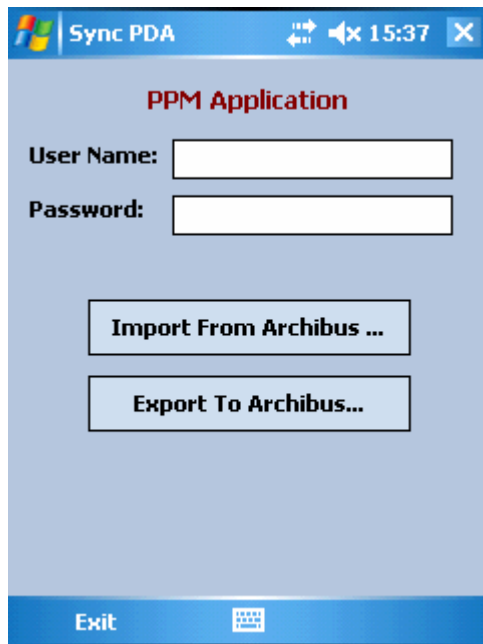


PPM_Mgmt

New Tools  

Click on Sync PDA

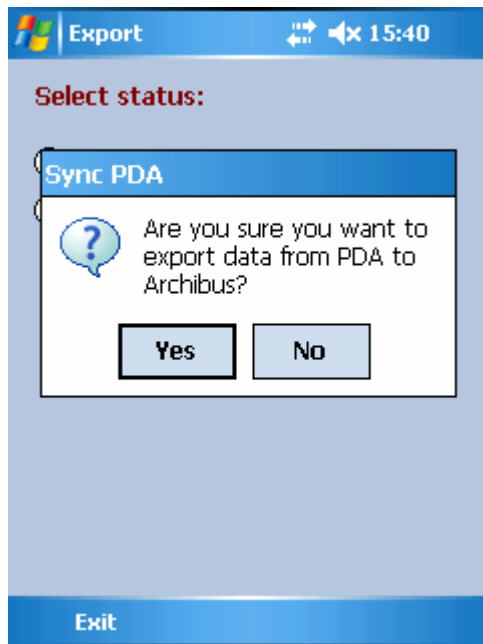




Enter Username and Password then click Export to Archibus

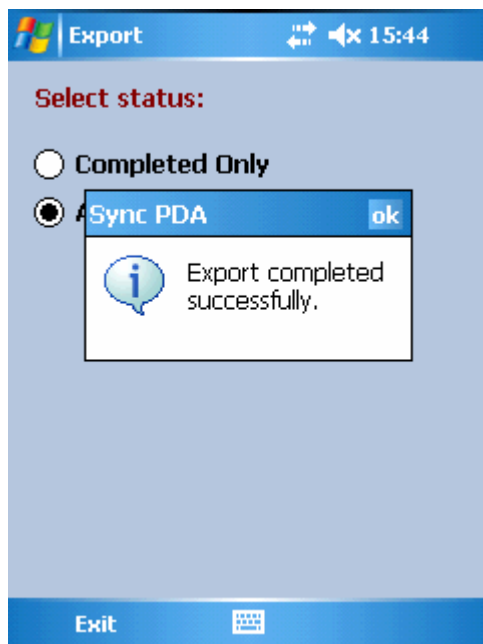


Click on All and Export



Click Yes

This could take about 10 minutes depending on amount of work orders.



Click ok then exit. Export is now complete